

FAIR CHANCE HOUSING POLICY

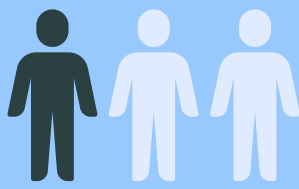


Fair Chance Housing Policy ensures everyone has a fair opportunity to secure decent quality housing. It is founded on the principle that housing is a human right for all of us. When individuals can't find homes, this affects the entire community. Safe and stable housing for everyone enables individuals, families, and communities to thrive.



Two thirds (65%) of individuals incarcerated in Pennsylvania's state prison are parents. That's more than 80,000 children in Pennsylvania.

Barriers to stable housing limit a parent's ability to build a better life for their children.



Nearly one in three American adults has a record.

This translates to over 3 million people in Pennsylvania.

\$42,727

Without stable housing, people are more likely to be re-incarcerated, costing Pennsylvania taxpayers over 42K per individual per year.

10X

People who are formerly incarcerated are 10 times more likely to experience homelessness.

Housing instability makes it difficult to find employment, connect with family, and build a better life.

COMMON SENSE SOLUTION

Fair Chance Housing Policy is not a new idea. Jurisdictions across the United States, like Cook County and Seattle, already offer protections to people with records.

IT'S GOOD BUSINESS

An over-reliance on one dimensional tenant screening company reports or background checks, which often carry mistakes, means that landlords are missing out on trustworthy, rent-paying tenants.



KEY TO REDUCING RECIDIVISM

People who are safely and stably housed experience higher rates of employment, medical coverage, and substance use treatment, along with stronger family relationships. Research across the board finds that participants with housing are significantly less likely to be re-arrested or re-incarcerated.

UPLIFTS RACIAL EQUITY

Pennsylvania has large racial and ethnic disparities in our prisons and our jails. These disparities have implications for homelessness: people of color who are formerly incarcerated experience much higher rates of homelessness and housing insecurity than white people who are formerly incarcerated.

Historic housing policies (redlining, predatory lending, etc.) also excluded people of color from safe and stable housing opportunities.



HOW DOES FAIR CHANCE HOUSING POLICY WORK?

Fair Chance Policy generally includes rules limiting how landlords can consider an applicant's record and outlines procedures that landlords have to follow when screening prospective tenants, as well as rules about how these requirements will be enforced.

It is most impactful when it connects to other tenant right's campaigns, including eviction record clearing, community ownership models, and affordable housing.

By supporting Fair Chance Housing Policy, we are:

- Stabilizing communities
- Supporting the children of formerly incarcerated individuals and family reunification
- Taking a critical step towards racial and economic justice
- Opening up funds for community investment by stopping cycles of shelter and incarceration
- Building a world we can all thrive in, based on dignity and self-determination

GET INVOLVED & LEARN MORE

Pennsylvania Senator Saval introduced Senate Bill 912 in October 2021. To join their campaign and share your thoughts, scan the QR code on the right or go to <https://www.pasenatorsaval.com/fairchancehousing/>

